



**Field Trip Meeting : Oct. 13, 2015 (2<sup>nd</sup> Tues)**  
 www.artistsleaguefsu.org  
 Museum - Artists' League Liaison:  
 Viki D. Thompson Wylder: [vwyllder@fsu.edu](mailto:vwyllder@fsu.edu) 284-3593

**No General  
 Membership Meeting**

6:00 - 7:00 pm

**Encore! Of Vision and  
 Variety**

Trip to the

**Top of the Capitol**

- time change due to restrictions imposed by the Capitol
- must park on the street or in the Kleman Plaza parking garage

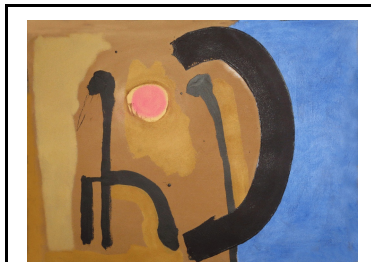
**Encore! Walk and Talk**

by artists in the exhibition. Please invite your family and friends!

With a new focus and new work from previous members, and work from new members, this exhibit follows an exhibition from 2003 held on the 22<sup>nd</sup> Floor of the Capitol Building entitled *Of Vision and Variety*.

The *Encore!* exhibition includes 60+ pieces by 40 League artists. The media is diverse, inclusive of fine art and fine craft, an apt representation of the League to the Florida public.

Work shown on the dramatic 22<sup>nd</sup> Floor gives Tallahassee artists greater exposure since it is often viewed by Floridians and others who travel to Tallahassee for business and as tourists.



From *Encore! Of Vision and Variety*  
 Kent Griffin, *Untitled*, Oil on Paper, 30" x 40".

*Encore! Of Vision and Variety*, as well as the previous *Vision and Variety* exhibition, were developed by long-time member Terrie Corbett who herself works in multiple media, kiln-fired glass,

Terrie Corbett



encaustic, and enamel. Both exhibitions, in coordination with the Florida Division of Cultural Affairs, took her several years to plan and bring to fruition.

Mark Fletcher, Kent Griffin, and Jaye Houle, all exhibitors in this exhibition, assisted at various times with various exhibition necessities. An additional exhibitor in *Encore!*, Mariann Kearsley, will facilitate the organization of the Walk and Talk.

**Art & Antiques Fair applications due by the October 13<sup>th</sup> meeting. Applications can be handed in or mailed to the Museum prior to this meeting. See included application forms. Questions? Contact Viki D. Thompson Wylder (contact info above) or Mary Liz Moody (contact info on back of the flyer).**

Quotation from ***The War of Art***  
 By Steven Pressfield

"Fonda was still throwing up before each stage performance, even when he was seventy-five. In other words, fear doesn't go away. [T]he artist live[s] by ... a code of necessity, which dictates that the battle must be fought anew every day."

– provided by Mariann Kearsley

